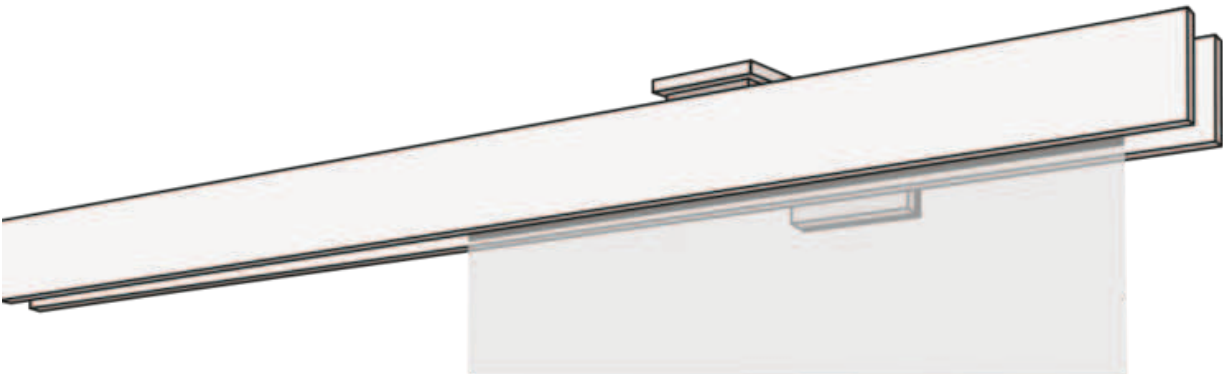


# PANEL CURTAIN

## F1-WANDSYSTEM ZWEILÄUFIG



F1 double curtain system in white, aluminum, stainless steel or chrome.



### Mounting

wall system

### Rail colours

- aluminum (79)
- stainless steel (77)

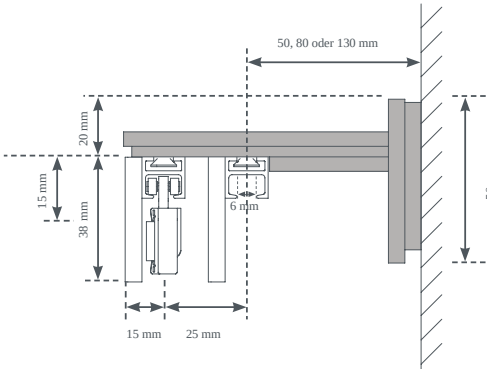
### Design variants

- detached (00125)
- Left wall stop (00126)
- Right wall stop (00127)
- wall to wall (00128)

### Extras for an extra charge

- panel truck
- Complaint bars

### cross-section



You can find further information at [leha.at](http://leha.at)  
 Project-related special designs available on request.  
 All values are manufacturer's specifications, production-related fluctuations are possible.  
 Stand 17.06.2025