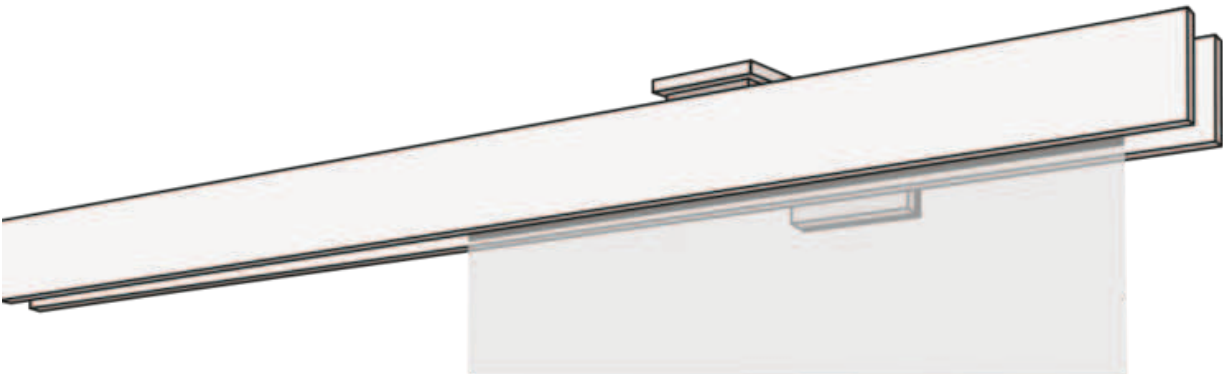


PANEL CURTAIN

F1-WANDSYSTEM ZWEILÄUFIG



F1 double curtain system in white, aluminum, stainless steel or chrome.



Mounting

wall system

Rail colours

- aluminum (79)
- stainless steel (77)

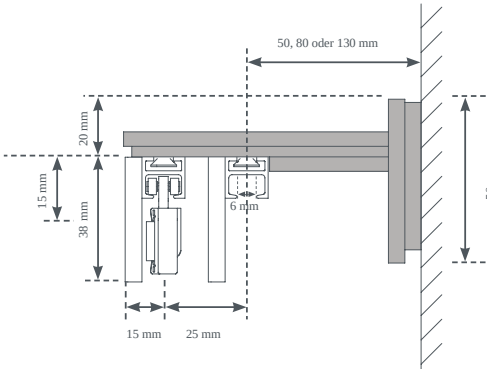
Design variants

- detached (00125)
- Left wall stop (00126)
- Right wall stop (00127)
- wall to wall (00128)

Extras for an extra charge

- panel truck
- Complaint bars

cross-section



You can find further information at leha.at
 Project-related special designs available on request.
 All values are manufacturer's specifications, production-related fluctuations are possible.
 Stand 27.01.2026